

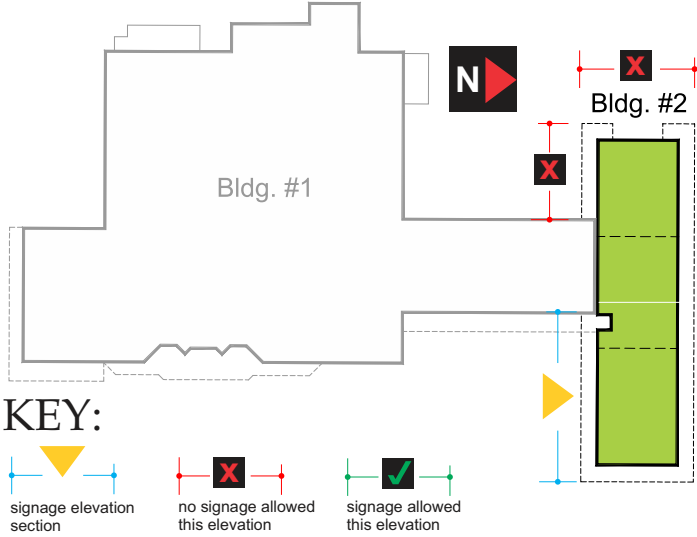
BUILDING 2: South Elevation In-Line Tenant Specifications

In-Line Tenant Signage Specifications: Single Bay

Square Footage Requirements:  
10% of tenants frontage along building facade.  
Frontage is calculated as the height of facade multiplied by the length of the facade.  
 $21'-10'' (21.8333) \times 24'-0'' (24.0) = 523.99 \text{ sq ft} \times 10\% = 52.39 \text{ sq ft}$   
  
Tropical Smoothie Café Example Allowable: 52.39 sq ft  
 $4'-6'' (4.5) \times 11'-3'' (11.25) = 50.625 \text{ sq ft}$

In-Line Tenant Signage Specifications: Dual Bay

Square Footage Requirements:  
10% of tenants frontage along building facade.  
Frontage is calculated as the height of facade multiplied by the length of the facade.  
 $21'-10'' (21.8333) \times 48'-11'' (48.9167) = 1068 \text{ sq ft} \times 10\% = 106.80 \text{ sq ft}$   
  
Tropical Smoothie Café Example Allowable: 106.80 sq ft  
 $3'-10'' (3.8333) \times 27'-6'' (27.5) = 105.41 \text{ sq ft}$



Existing Conditions: Elevation A South, Building 2



Glen Welden & Associates, LLC  
3200 N FEDERAL HIGHWAY, SUITE 206-11 BOCA RATON FLORIDA 33431  
email: gwadesign@gmail.com  
website: gwelden.com

project name:



project address:  
281-299 SW 26TH AVENUE  
POMPANO BEACH FL

date:  
10/28/24

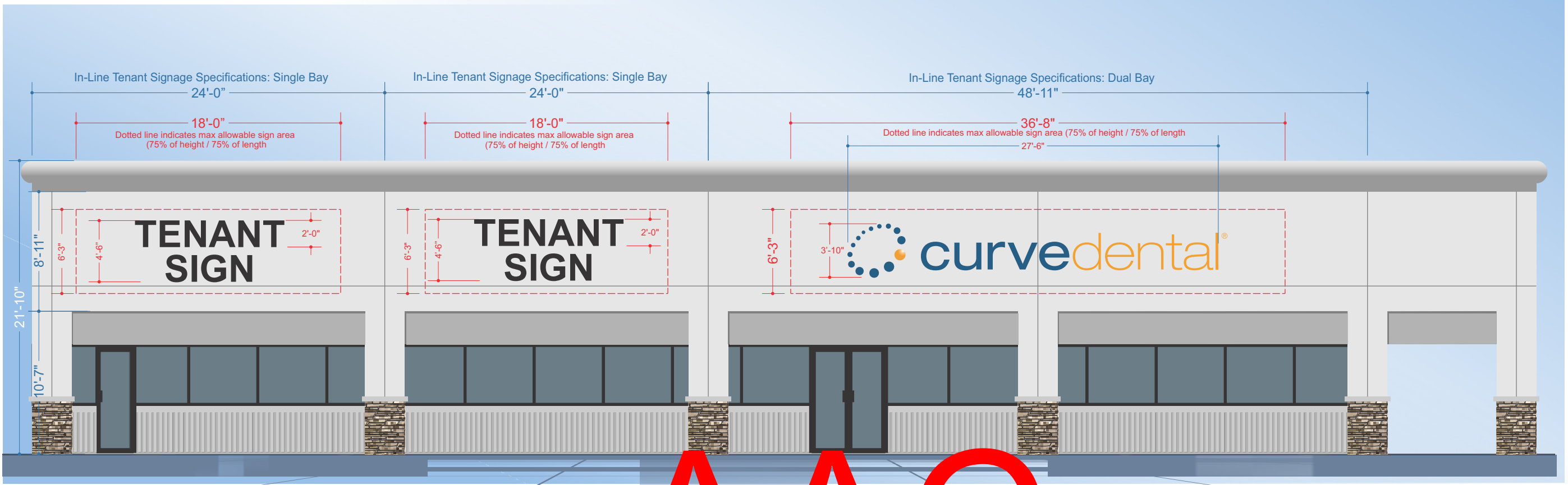
scope of work:  
Master Sign Plan for Palm Aire Market Place

client



notes

- 1. x
- 2. x
- 3. x



South Elevation A / Building 2

Note: The elevations shown depict "typical" examples of tenant signage, placements and storefront lengths to help guide tenants with detailed information on message sizes and placement on the tenants elevation. The examples of tenant storefront elevation measurements shown in this MSP may change depending on tenant needs and availability of storefronts. Final signage placement and dimensions to be determined by the adjusted allowable square footage calculations for tenant signage per City of Pompano Beach Sign Code

SCALE: 1/8"=1'-0"

AAC  
PZ24-30000007  
12/03/2024